

**This newsletter is  
sponsored by:**

- Crooked Creek Golf Club
- Forcht Bank
- Hotwire Productions.net
- Jackson Energy Cooperative
- McKnight Properties

*Thank you for your support!*

**Next Chamber Luncheon:**

**Thursday, Nov. 16**

**12:00 noon**

**London Community Center**

**\$10.00 per person**

**SPONSORED  
BY:**



## World Class Sponsorship

**We are now enlisting Sponsors for 2018**

**As a World Class Sponsor you will receive:**

- ♦ Annual Banquet Sponsorship - \$500 value
- ♦ Monthly Lunches (2 per month) - \$240 value
- ♦ Golf Sponsorship including team - \$500 value
- ♦ 1 Year Advertising on Website - \$500 value
- ♦ Company Logo in Chamber Newsletters - \$600 value
- ♦ Advertising at all lunches and events - \$1000 value
- ♦ Volleyball Tournament Team - \$250 value

**Total Value of Package is \$3590**

**Total Cost to become a World Class Sponsor  
is only \$2500**

**To sign up, contact the Chamber office  
today at 606-864-4789.**

**The deadline is December 31, 2017.**

## Business After Hours held at Center Target Firearms & Indoor Range

Center Target opened it's doors in February, offering firearms and accessories, the most advanced indoor range for 100 miles, gunsmith services, training classes and a café. You can see the attention to detail and commitment to excellence in every aspect of the locally owned and operated store and range. Owners Joe and Sheena Robinson invite you and your family to come in and enjoy the experience.



Michael Sharpe

Contact us today to  
get your business moving  
in the right direction.

**Forcht Bank**  
A new direction in banking.

London Banking Center  
100 First Financial Plaza  
(606) 864-9500

forchtbank.com | Member FDIC

Jackson Energy  
Working for You

www.  
jacksonenergy.  
com

1 800-262-7480

*The London - Laurel County Chamber of Commerce would like to recognize our*

## WORLD CLASS SPONSORS



**The Chamber is pleased to welcome our newest members:**

**Edward Jones Investments – Jonathon Hibbard**

# Welcome!

## Renewing Chamber Members

- **Anderson Oral & Maxillofacial Surgery**
  - **BaptistWorx**
  - **Bluegrass Care Navigators**
- **Brandeis Machinery & Supply Company**
  - **Buddy's Liquor**
- **Cumberland Foot and Ankle Center**
- **Cumberland Valley Domestic Violence Services, Inc.**
  - **Flowerworks**
  - **Foster Supply Inc.**
  - **Friends of Boone Trace, Inc.**
- **Gilpin Construction Company, Inc.**
  - **London Auto Sales, LLC**
- **London Community Orchestra**
- **London Financial Services**
- **Martin's Insurance Group**
- **Mink's Lawn & Landscape Contractors**
  - **Old Town Grill**
  - **Ott's General Store**
  - **Perry Distributors Inc.**
- **Rural Transit Enterprises Coordinated Inc. (RTEC)**
  - **Surplus Sales, Inc.**
- **Taylor, Keller & Oswald, PLLC**
- **United Outdoor Media LLC**
  - **Uptown Florist**





IN THE SPOTLIGHT



## Laurel County Chiropractic

Laurel County Chiropractic is a chiropractic office established in London 25 years ago by Dr. Anthony A. DeCarlo. After graduating from Logan Chiropractic College in Missouri, he and his wife moved to London Ky. Initial services offered when the office was first opened were those of the average Chiropractor coming out of college at that time. Over the past 25 years, Dr. DeCarlo has continued his studies and added rehabilitative services to his practice.

In 1994 he received a certification in sports injuries from the National College of Chiropractic. In 2006 he received a Diplomate level degree in rehabilitation from the American Chiropractic Rehabilitation Board, followed by a corrective exercise specialist certificate from the National Academy of Sports Medicine.

Dr. DeCarlo studied 3 different adjusting techniques in college: Diversified, Cox Flexion Distraction and Activator. The techniques for adjusting complement the rehabilitation philosophy at the office. Injuries to the spine are generally accompanied by injuries to the muscle as well. That being true, it is necessary to treat both for a complete recovery. An incomplete recovery would be followed by the same area of the body getting repeatedly injured or the pain coming back. The idea of complete recovery is important in daily lives of people here in London as it is in professional sports. Professional sports people begin there rehabilitative treatment the same day in most cases so that they can continue their highly physical careers. The rest of us should do the same so that our days are not filled with pain and discomfort.

In chronic conditions, the purpose of rehabilitation is to restore as much mobilization and strength as can be obtained. This decreases the amount of disability or total function loss. It can mean the difference in some cases of holding a friend or relatives baby or only being able to look at it. Another example might be taking up activities you haven't been able to do with your friends like hiking or bicycling.

Besides Dr. DeCarlo, there are 3 others that work at his office - Tammy Williams, Cindy Pataki, and Brandy Adams. Each employee does their part to help you through your treatment program to better health.

This office is open to accommodate as many work and life schedules as we can. Monday and Friday 8:15am until 6:00pm, Tuesday and Thursday 8:15am until 7:00pm, Wednesday and Saturday 8:15am until 12:00pm. We look forward to helping you. Hope to see you soon!

**Call us at 606-864-3595**



**(606) 682-6799**

bright ideas for better websites

Michael Sliter  
michael@hotwireproductions.net

<web\_design>  
<web\_hosting>  
<email\_solutions>  
<SEO>  
<graphic\_design>  
<consulting>  
<photography>

### McKnight Properties

Development-Leasing-Management  
Apartments, Retail, Offices, & Self-Storage

25 Commercial Drive  
London, Kentucky 40744  
Phone (606) 864-8359  
Fax (606) 878-6994  
www.mcknightproperties.com



**Julia McKnight**  
Juliamcknight1@hotmail.com



With Christmas just around the corner, it's time to support your local Toys For Tots toy drive. Businesses, schools and individuals can help by donating a new unwrapped toy to a Toy Collection Site nearby or by assisting with toy collection, sorting or distribution. Helping to coordinate special toy drives or fund raising events is a great way to get involved.

Local businesses are instrumental in the success of the Toys For Tots program. Several of our own Chamber members will be collections sites for this year's toy drive. Please drop off your donations at any of these businesses:



**Flowers Bakery**  
of London, LLC



**1st National Bank  
And Trust**



**CENTER  
TARGET**



### **KY Real Estate Professionals**

celebrated the opening of their new branch office with a ribbon cutting on Friday, October 20th.

Their office is located at 2886 KY Hwy 1629 in Corbin.

KY Real Estate Professionals is looking forward to serving the Tri-City area. Their office is rapidly growing with agents that are motivated to help you buy, sell or invest in real estate. Give them a call at 859-314-7454.





## RECENT RIBBON CUTTINGS



**Maple Leaf Furnishings**  
Located at 1226 South Main Street



**The Broken Spoke Trail**  
Located in Levi Jackson State Park



Do you have a tip or an informational article that you would like to pass on to your fellow Chamber members? If so, contact the Chamber office and we will include your article in our next newsletter!

# Congratulations



For the 10th consecutive year, God's Pantry Food Bank has earned the highly prized **4-Star Rating** from **Charity Navigator** for their strong financial health and commitment to accountability and transparency. They are proud to be among the top group of nonprofits that have received this esteemed ranking.



*Give generously this holiday season!*



## HAVE YOUR CHRISTMAS PARTY AT CROOKED CREEK

Crooked Creek Golf Club wants to be your host for the holidays. With our spacious and luxurious clubhouse, we are a perfect venue for your holiday party. Book your event now !!!

### CROOKED CREEK GOLF CLUB

781 Crooked Creek  
Drive London KY  
40744

[Crookedcreek2016@  
gmail.com](mailto:Crookedcreek2016@gmail.com)

606-877-1993

- Custom food and drink menu options
- Spacious rooms to accommodate any size party
- Flexible hours of operation
- Music entertainment available



## October Luncheon Photos

**Special Thanks to our October Luncheon Sponsor**



Speaking on behalf of Saint Joseph London, our guest speaker was Dr. Don Morring, Jr. Dr. Morring is a General Surgeon at the hospital.



Carol Wright, CEO of Jackson Energy speaks to the luncheon attendees about the lineman rodeo that they hosted here in London.



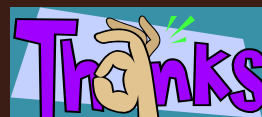
Pictured Left: Ann Marie Francis, Event Coordinator for God's Pantry Food Bank informs Chamber members about the upcoming Taste of Southeast KY fundraiser.



**Jackson Energy's Rodeo Champions**

The Chamber would like to thank the following businesses that donated prizes at our October luncheon. . .

- ♦ First National Bank and Trust
- ♦ God's Pantry Food Bank
- ♦ Hotwire Productions.net
- ♦ Jackson Energy Cooperative
- ♦ L&N Federal Credit Union
- ♦ Martin's Insurance Group
- ♦ Northwestern Mutual
- ♦ Old Town Grill
- ♦ Regency Cinema 8
- ♦ Smokey Bear's BBQ
- ♦ The Job Shop







## Students Learn Virtual Cadaver System

Students in the **Allied Health Science (AHS)** and **Biomedical Science (BMS)** career pathways at the Laurel County Schools Center for Innovation (CFI) are learning to identify anatomical features and physiological functions of the human body utilizing the Anatomage Table. Mr. Ed Bowling, CFI instructor, spoke about the utility of the Anatomage Table with regard to students being able to examine male and female specimens virtually. "It is an impressive system to use and has become an excellent tool for teaching anatomy and physiology", said Mrs. Misty Allen, CFI instructor. Both faculty added that wet lab dissections are still part of the training that students receive in their respective program areas at the CFI.

"Students are able to complete virtual autopsies and medical investigations with minimal lab prep time with the Anatomage Table", remarked Mrs. Tammy Jones, CFI instructor. "Students can view gross anatomical features, specific body systems, disease states from the media images library, as well as veterinary applications learning about dogs, cats, and other small animals", added Jones. "Our students are learning how to interact with advanced technology and computer applications as they prepare to become healthcare practitioners" said Dr. James M. Davis, CFI Principal. "The Anatomage Table has become the latest in advanced technology utilized in medical schools around the United States and the CFI is the only secondary-level school in the world providing this technology for student learning activities" stated Davis.



L-R: Darrell Williams and Kaitlyn Day utilizing the Anatomage Table to study the human nervous system.

## ***THE AMBASSADOR PATROL STRIKES AGAIN!***

The Chamber Ambassadors continued their “patrol” last month and surprised six of our members with balloons and cookies in hand. Each business was also presented a “free lunch” certificate to our general membership luncheon. The purpose of the Ambassador Patrol is to let our members know that we appreciate their commitment and support of our Chamber and to encourage further participation in Chamber events.

***Be on the lookout. . . next month they might be visiting you!***



**H&R Block Income Tax**



**Starr's Liquor**



**Evening Shade**



**Mad Ox Games & Comics**



**Family Options-  
Developmental Planning**



**T & W Ventures  
DBA Subway**

## Chamber Calendar



**Nov. 16— Chamber Membership Luncheon**  
12 noon at London Community Center

**Nov. 23— Happy Thanksgiving**

**Nov. 25-26— Sights & Sounds of Christmas**

Saturday 10 am—5 pm

Sunday 12 noon—5 pm

**Nov. 28 — Ribbon Cutting**

2 pm at The White Lily Florals & Gifts

**Dec. 1— Randy Smith Christmas on Main Parade**

Festivities at 5 pm; Parade at 7 pm

**Dec. 14 — Chamber Christmas Luncheon**

12 noon at London Community Center

*For more information on any of these events, contact the  
Chamber office at 864-4789 or [info@londonlaurelchamber.com](mailto:info@londonlaurelchamber.com)*



## Coming soon . . .



**Ribbon Cutting at**

**The White Lily Florals & Gifts**

**Tuesday, November 28 2 pm**

**To celebrate their new location at 309 W. Dixie Street**



**Your Chamber**

## Board of Directors



### Executive Committee

#### President

**Michael Sliter** | Hotwire Productions.net

#### Vice-President

**Scott Webster** | Tooms, Dunaway & Webster

#### Secretary

**Lisa Baker** | Jackson Energy Cooperative

#### Treasurer

**Donnie Cox** | Christian Sturgeon & Associates, PSC

### Directors

**Sharon Bengé** | Bengé Farm Supply

**Garry Conley** | Minuteman Press

**Larry Corum** | London Corbin Airport

**Terry Deis** | Saint Joseph London

**Donna Gregorich** | Century 21 Advantage Realty

**Winston Griffin** | Laurel Grocery Company

**Haskew Hayes** | Cumberland Valley National Bank

**Dana Johnson** | L & N Federal Credit Union

**Chris Minton** | Wildcat Harley-Davidson

**Bud Stuber** | The Computer Place

**Kenny Woodruff** | Mr. Electric & Nite Time Decor