

This newsletter is sponsored by:

- Forcht Bank
- Hotwire Productions.net
- Jackson Energy Cooperative
- McKnight Properties

Thank You!

Next Chamber Luncheon

Thursday, Sept. 15

12:00 noon

London Community Center

\$13.00 per person

SPONSORED BY:



Chamber of Commerce  
LONDON • LAUREL COUNTY

# CHAMBER GOLF CLASSIC

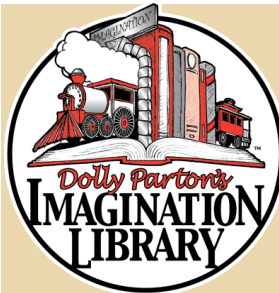
FRIDAY, OCTOBER 7, 2022  
LONDON COUNTRY CLUB

## REGISTER YOUR TEAM TODAY!

Can we add your logo to this list of Sponsors? Details on Pg. 3



## WORLD CLASS SPONSORS



## Coming soon to Laurel County! Dolly Parton's Imagination Library

The Chamber has been working hard so that we can bring Dolly Parton's Imagination Library to Laurel County. The London Laurel County Chamber of Commerce Foundation has been established and a Board of Directors has been formed and recently conducted their first meeting. Daniel Carmack has generously started the ball rolling on donations by being the first to present us with a check and the Chamber staff will be receiving training soon so that we can manage the database for this important endeavor.

For those of you who may not know about DPIL, here is how it works: All children, ages 0 to 5 who live in Laurel County will be eligible to sign up to receive a FREE book in the mail every month until their 5th birthday!

Watch for details in the coming days and consider donating to this much worthy cause.

IN THE SPOTLIGHT



Pictured above: Donnie Cox, Ray Shears, Dana Douglas, Levi Alley, Deanna Herrmann and Jane Dyche.





CHAMBER  
G • O • L • F  
CLASSIC

Friday,  
October 7th  
London Country Club

\*\*\* Now Enlisting Sponsors \*\*\*

Cost of Sponsorship is \$600 and here is what is included:

- *A four-member team in the tournament (a \$300.00 value)*
- *Company Name or Logo on all printed materials regarding golf tournament. This includes the Chamber's massive email data base (over 1000 business contacts), our Chamber newsletter, Chamber website and local media.*
- *Sponsors will be designated a hole with signage indicating their name/logo the day of the event. Hole Sponsors are encouraged to man their hole and promote their business.*

Goody Bag items and Door Prizes are also needed . . .  
*Support your Chamber with a generous donation!*



To sign on as a Sponsor or make a donation, contact the Chamber office at 606-864-4789 or email us at [info@londonlaurelchamber.com](mailto:info@londonlaurelchamber.com)

**Congratulations!**



DEANNA HERRMANN NAMED LAUREL COUNTY  
HOMECOMING WOMAN OF THE YEAR



**RECENT RIBBON CUTTINGS**



**Embrasè Med Spa**  
Located at 202 N. Hill Street



**Pink Cashmere**  
Located at 100 Shiloh Drive

# Putt Putt for a Cause

On August 20th, the Chamber joined forces with the Laurel Co. Homecoming and Levi Jackson Wilderness Road Park to sponsor a Putt Putt Scramble to benefit the East Kentucky Flood Victims. A great time was had by all and almost \$3000 was raised! Congratulations to Hotwire Productions.net who landed in first place by one stroke! They each received a gift card compliments of Old Town Grill.



# CHAMBER SPOTLIGHT

SEPT.  
2022



The World Chicken Festival is four days packed with free music at The Stage of Stars and Sanders' Stage, crazy contests, carnival rides, arts and craft vendors and delicious fried chicken from the World's Largest Stainless Steel Skillet.

The Chamber of Commerce will be selling the official WCF t-shirts again this year. Come see us at our booth in front of Butcher's Pub!

Prices are \$20 for adult sizes; \$13 for youth; \$25 for long-sleeve shirts and \$30 for hats.



## FESTIVAL HOURS

Thursday - 5pm—11pm    Friday - 10 am—11 pm  
Saturday - 10am—11pm    Sunday - 1 pm—5 pm

*See you at the festival!*

**McKnight Properties**

Development-Leasing-Management  
Apartments, Retail, Offices, & Self-Storage

1612 Hampton Road  
London, Kentucky 40741  
Phone (606) 864-8359  
Fax (606) 657-5250  
info@mcknightproperties.com



**hotwire  
productions  
.net**

web design • web hosting • graphic design • video production

Michael Sliter  
telephone | 606.682.6799  
e-mail | michael@hotwireproductions.net

po box 339  
london, ky 40743  
www.hotwireproductions.net

# August Luncheon Photos

Special Thanks to our August Luncheon Sponsor:



Speaking on behalf of Windstream was Jimmy Keeton, Manager SMB Field Sales-KY

# New Members



Alzheimer's Association  
April Goodin & Paul Matney

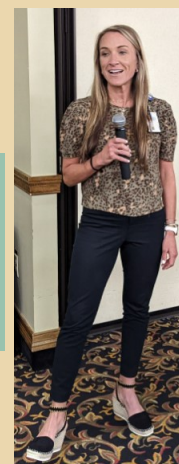


Structure House Sober Living  
Bret P. Watkins



Our program was presented by Edward Jones Financial Advisors Jonathon Hibbard, Todd Strouse, Mike Fiechter and Robyn Armstrong.

Anne Yates with Veterans Affairs also spoke to the luncheon attendees.



The Chamber would like to thank the following businesses that donated prizes at our August luncheon. . .

- ◆ Baptist Health
- ◆ Donna Gregorich
- ◆ Edward Jones Investments
- ◆ Hotwire Productions.net
- ◆ Kinetic by Windstream
- ◆ Kentucky Music Hall of Fame
- ◆ Old Town Grill
- ◆ Somerset Community College
- ◆ The Job Shop Staffing Services



*The Chamber is pleased to welcome our newest members:*



- Irvine Contracting, LLC
- Class 101 Eastern Kentucky

## Renewing Chamber Members

- Acute Title, LLC
- Cumberland Isotopes, LLC
- Cumberland Valley Children's Advocacy Center
  - ECO-Tech USA, LLC
  - Exela Technologies
    - Flowerworks
  - H&R Block Income Tax
  - Housing Authority of London
- Keller Williams Legacy Group of London
- Laurel County Adult Education & Literacy
  - Laurel County Homecoming, Inc.
    - Local Honey
  - Michael Smith Consulting
- Mink's Lawn & Landscape Contractors
  - PT Pros, Inc.
- Robinson's Premium Meats
  - RRJ Solutions
  - Secure Stream, LLC
  - Shoe-Inn Family Footwear
  - Southern Truckstops LLC
  - The Barn at Mills Farm
- Tooms, Dunaway & Webster, PLLC
  - Truist
- Valley RV Sales LLC



Jackson Energy

Working for You

www.  
jacksonenergy.  
com

1 800-262-7480

**7AM - 7PM BANKING  
MONDAY THRU SATURDAY**

*Can your bank do that?*



Member FDIC | forchtbank.com



## *Your Chamber Membership can Save you Money*

*As a member of the Chamber, you have access to several discount programs that you may not be aware of. Keeping reading and find out how we can help you save!*



Members will receive a total of 10% discount off their estimated annual premium on Workers' Compensation Insurance through ClearPath Mutual.



The Kentucky Chamber has teamed up with Anthem Blue Cross and Blue Shield to offer groups with 2 to 50 employees an opportunity to participate in a larger, self-funded pool that gives you financial protection backed by Anthem's stop loss coverage. This health care solution is called the Chamber-Advantage plan.

## **Office DEPOT**

This program is set up for our local Chamber by the Kentucky State Chamber and its contractual agreement with Office Depot. This offer brings exclusive savings to Chamber members with special pricing on hundreds of office depot products that you use every day! The product list is available to members upon request.



As a benefit of your Chamber membership, you can grow your business with Constant Contact's industry-leading online marketing tools: newsletters and announcements; offers and promotions; events and registration; and feedback and surveys. Best of all, you'll enjoy exclusive savings of up to 25%, with plans starting as low as \$20 per month.

# Upcoming Ribbon Cuttings

**Kinetic by Windstream - Wednesday, Sept. 14th - 11:30 am**  
Located at 719 North Main Street

**Steel Blades Barber Shop - Friday, Sept. 16th - 10:00 am**  
Located at 1650 Hwy 192 E

**Scrub Skin Bar - Monday, Sept. 19th - 12:00 pm**  
Located at 500 South Laurel Road

**Klashed on Main - Monday, Sept. 26th - 10:00 am**  
Located at 130 North Main Street

**Keller Williams Legacy Group - Thursday, Oct. 13th - 12:00 pm**  
Located at 108 Carter Drive

**Coming Soon!**  
**September**  
**22nd—25th**



## Your Chamber Board of Directors



### Executive Committee

#### President

**Michael Sliter** | Hotwire Productions.net

#### Vice-President

**Scott Webster** | Tooms, Dunaway & Webster

#### Secretary

**Lisa Baker** | Jackson Energy Cooperative

#### Treasurer

**Donnie Cox** | Abner & Cox, PLLC

### Directors

**Sharon Bengé** | Bengé Farm Supply

**Doug Bennett** | Laurel County Public Schools

**Garry Conley** | Minuteman Press

**Donna Gregorich** | Century 21 Advantage Realty

**Winston Griffin** | Laurel Grocery Company

**Karen Hyde** | Legacy Nissan

**Brandon Keck** | JBK, Inc. Roofing Division

**Chris Minton** | Wildcat Harley-Davidson

**Ward Stokes** | Cumberland Valley National Bank

**Donevon Storm** | Donevon Storm Insurance Agency

**John Yanes** | Saint Joseph London